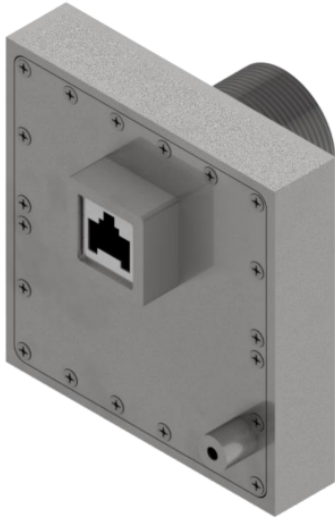


***Pasif 1G* Ethernet Electromagnetic Interference (EMI) Filter**



The *Pasif 1G* EMI Filter is the most effective passive, unpowered EMI filter for Ethernet available on the market. The filter is designed to pass Ethernet (10Mb/s), Fast Ethernet (100 Mb/s) and Gigabit Ethernet (1000 Mb/s) network communications, while rejecting unwanted signals starting from 550MHz to 40GHz at better than 80dB and better than 100dB between 700MHz and 30GHz. Invisible to connected network devices, the *Pasif 1G* allows connected network devices to auto-negotiate to the fastest data rate supported by both end points. Military grade passive filtering technology ensures that Ethernet packets traverse the filter in complete and absolute isolation from each other and the outside world. Signal lines are balanced perfectly throughout the multilayered cards to avoid disturbing the fast rise times required by digital square wave signals. The result is a pristine digital output far surpassing the filtering capabilities of other passive EMI filters.

Each *Pasif 1G* EMI Filter is mounted in a rugged protective housing machined from solid aluminum stock. The housing not only provides physical protection to the filter components, but is also an integral contributor to the filter's effectiveness. The unique structure of the housing effectively disrupts undesirable emissions from propagating through the filter while simultaneously providing low impedance pathways for interference to be directed out of the filter.

Features:

- Military grade passive filtering techniques maintain clean and sharp signals
- Highest quality electrical components deliver long service life
- Rugged protective housing insures reliability in any environment
- Passive electrical design allows flexibility in location and operation

**The *Pasif 1G* EMI Filter
The critical choice when blocking EMI is paramount.**

Specifications

Filter Performance	Shielding Effectiveness	>100dB from 10kHz to >800MHz (typical) >80dB from 800MHz to 16GHz (typical) >70dB from 16GHz to >20GHz (typical)
	Insertion Loss	>80dB from 550MHz to 40GHz (typical) >100dB from 700MHz to 30GHz (typical)
Network Performance	Auto Negotiation Hot Pluggable Auto Link Restoration	Invisible to connected network devices. Does not interfere with network link negotiations or operations.
	Communication Standards	IEEE802.3i 10Base-T (Ethernet) IEEE802.3u 100Base-T (Fast Ethernet) IEEE802.3ab 1000Base-T (Gigabit Ethernet)
Environmental	Operating Temperature	0°C - 40°C (32°F - 104°F) Continuous
	Humidity	5% - 90% (non condensing)
Construction	Filter Housing	Aluminum w/Electroless Plated Nickel
	Dimensions	3.40" x 3.25" x 0.73"
	Mounting	1-20 UNEF-2A Mounting Stub for Threaded Penetration 1" NPS Threaded Penetration (1.32" Ø x 1", 3" or Custom Length)
	Connectors	RJ-45 8P8C Jack (x2)

PRELIMINARY Drawing

